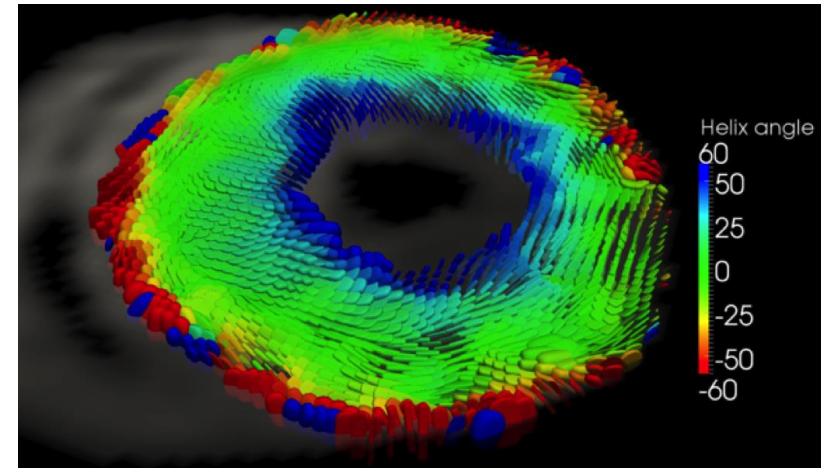


# Do you have dilated cardiomyopathy?

The **NIHR Royal Brompton Cardiovascular Biomedical Research Unit** is currently looking for **patients with dilated cardiomyopathy to undergo a heart MRI scan** as part of an ethics approved research study.



Example of heart MRI scan image  
*Courtesy of P. Ferreira, RBH BRU 2012*

All subjects will undergo a specialised MRI scan using a cutting edge technique developed within our department. Participation will help to advance our understanding of healthy heart function thereby paving the way for improved diagnostics for patients.

If you are interested or would like further information please contact me at [Z.Khalique@rbht.nhs.uk](mailto:Z.Khalique@rbht.nhs.uk) or on **02073528121**, extension **2929**

Dr Zohya Khalique  
Cardiovascular Magnetic Resonance Research Fellow  
Biomedical Research Unit, Royal Brompton Hospital